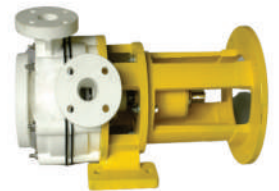


Fluidotech™

Chemical Processing Pumps



JAS-ANZ

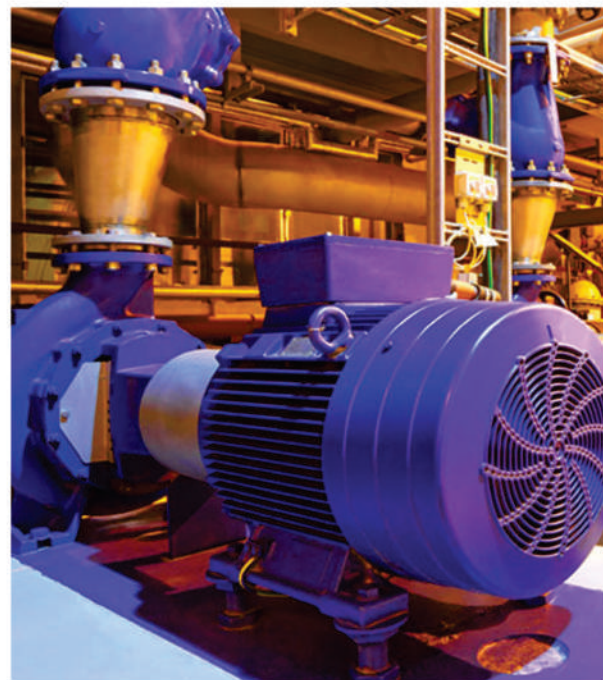


COMPANY

Fluidotech Pumps & Equipment Pvt. Ltd. as the name goes, we are into Designing, developing Manufacturing Erecting, Commissioning and Servicing of pumps & Pumping Systems. Being established in the year 2016 at Delhi, we have successfully a milestone of glorious 5 years with Specialization in Industrial Pumps.

During a short span of time, our company Fluidotech Pumps earned a Reputed name for the quality of its products while establishing its Presence in the industry. with our skilled and well experienced Professional of the industry, we have taken an immense care at every Stage right from designing of the pumps until providing trouble free Service to our valued customers. Being supported by latest technology, Infrastructure and updated with modern machinery tools, our eminent Team bring satisfaction of our clients.

Fluidotech Pumps & Equipment Pvt. Ltd flaunts its product gamut of assorted Chemical Process Pumps, Self Priming Pumps & Utility Pumps to cater the distinguished needs of chemical processing. Our Pumps sets are operated with no noise, high discharge, low power consumption, high efficiency and are very economical. With unmatched quality of our products and customer - centric approach, we are exporting our products to more than 20 countries.



Quality Assurance



The Prime objective of our organization is to offer a range of quality Industrial Pumps for ensuring maximum client satisfaction. To attain this we continuously upgrade our working mechanism and machines that enable us to survive in this competitive industry. We are backed by an efficient team of quality controllers, who meticulously check the products at each and every stage of production at our state - of - the - art in - house quality testing division.

All Our pumps go through performance Evaluation at our in-house state art of technology test bed

DURABILITY

PERFORMANCE

POWER

CORROSION RESISTANCE

STRENGTH

MAINTENANCE

Our organization provides its clients with a quality range of industrial Pumps as per customer's specifications by following the below mentioned measures:

- Awareness of total quality among all the employees
- Strictly using quality raw material to assure the required specifications
- Applying modern manufacturing techniques
- Constant up - gradation of the method and technology for quality improvement and cost reduction
- Strictly adhering to delivery schedules

PRODUCT LINE

LCP Series

Low Capacity, Intermittent Duty



Flow Rate : Upto 20m³ / hr.
Total Head : Upto 20 mtr.
Power : Upto 3HP.

MCP Series

Excellent for continues Duty

High Speed



Flow Rate : Upto 50m³ / hr.
Total Head : Upto 50 mtr.
Power : Upto 12.5HP.

Low Speed



Flow Rate : Upto 50m³ / hr.
Total Head : Upto 50 mtr.
Power : Upto 5 HP.

VERTICAL Seal-Less Pump

No Maintenance.



Flow Rate : Upto 35m³ / hr.
Total Head : Upto 25 mtr.
Power : Upto 5 HP.

PRIMING Pot

For Negative Suction Lift.



Capacity : Upto 80ltr.
Special Size Available.

LCP Series

Standard Pumps filled with Ceramic Sleeves and Teflon Bellows Mechanical Seals. Excellent for handling corrosive chemicals like HCL, dil H2SO4, HNO3, FeCl3, CuSO4, HF, HBr, CH3COOH, NaOH, H3PO4, NaCl etc.

Applications

- Alkalies Transfer
- Recirculation of Electrolyte
- Scrubbing of Corrosive Gasses like Cl₂, Br₂, I₂, SO₂, CO₃
- Effluent Treatment
- For Descaling of Tubes
- Filtration

Industries

- Chloro - Alkali Industries
- Chemical & Pharma Industries
- Food Industries
- Electronic Industries
- E.T.P. / W.T.P.
- Electro Plating Industries

Models

- LCP-100
- LCP-120
- LCP-130
- LCP-135



LCP-100



LCP-120



LCP-130



LCP-135

Low Capacity Pumps

Performance Data

Model No.	Suction (MM)	Delivery (MM)	IMP (MM)	HP	RPM	Head (MWC)		v/s	Capacity (M ³ / Hr)		
LCP-100	25	25	100	1	2900	12 00	11 02	08 04	07 06	05 08	03 09
LCP-120	40	40	120	2	2900	14 00	12 03	10 06	08 09	06 12	04 15
LCP-130	40	40	130	3	2900	25 00	22 06	20 09	17 12	15 15	12 18
LCP-135	50	40	140	3	2900	27 00	25 04	20 08	18 12	16 15	12 20

These Pumps are Recommended for :

- Intermediate duty of 4 to 8 hours per day running.
- Occupies less space, easy to handle & economical.
- Electroplating solution circulation & etching solution for electronic circuit board.
- Available with PVDF impeller & silicon carbide mech. seals for high temperature and aggressive acids.
- Pumps are available with Internal Mechanical Seals (IMS).
- Pumps are available in Gland Packing construction.
- Above pumps are also available in PTFE lined construction.
- Pumps are supplied with special Mech.Seals for applications like Slurries, Thicker Liquids, Mixing Fluids etc.

Performance data mentioned are indicative & subject to change without any prior notice.

MCP Series

The New MCP High Speed Series consists of 5 Models

High Speed Series

• MCP - 140 • MCP - 150 • MCP - 160 • MCP - 170 • MCP - 180

Model No.	Suction (MM)	Delivery (MM)	IMP (MM)	HP	RPM	Head (MWC)			Capacity (M ³ / Hr)			
MCP - 140	40	40	135	2	2900	14.00	12.04	10.07	9.08	8.11	7.13	06.15
MCP - 150	40	40	145	3	2900	22.00	20.03	18.08	15.12	14.16	12.20	10.25
MCP - 160	75	40	155	5	2900	31.00	26.12	24.15	20.25	18.30	14.34	12.38
MCP - 170	75	50	160	7.5	2900	35.00	30.15	28.24	26.32	20.38	16.54	14.50
MCP - 180	50	40	185	12.5	2900	51.00	45.14	40.20	35.25	30.40	26.44	24.48



MCP - 160



MCP - 170



MCP - 180

These pumps are high head (upto 50 mts) with different capacities coupled to 2900 RPM motors.

These Models are Highly Recommended for :

- Excellent for scrubbing corrosive and aggressive gases like Cl₂, Br₂, I₂, SO₂, CO₃, etc.
- Used in transfer of chemical in batch process.
- Recommended for use against filter press in dyes and intermediate industries.
- For recirculation of chemicals in electroplating industries.
- All Models - are available with PVDF impellers for high temp. upto 90°C.
- ALTRA-180 Model is high head (upto 50 mts) low capacity pump coupled to 2900 RPM motor. Excellent for vacuume ejectors.
- Pumps are available with Internal Mechanical Seals (IMS).
- Pumps are available in Gland Packing construction.
- Above pumps are also available in PTFE lined construction.
- Pumps are also available in Gland Packing
- Pumps are supplied with special Mech.Seals for applications like Slurries, thicker liquids, mixing fluids etc.
- Pumps are available in special material on request.

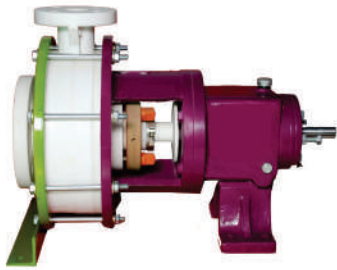
Performance data mentioned are indicative & subject to change without any prior notice.

MCP Series

The New MCP Low Speed Series consists of 3 Models

Low Speed Series

• MCP - 190 • MCP - 200 • MCP - 210



MCP - 190



MCP - 200



MCP - 210

Low Speed Pumps

Performance Data

Model No.	Suction (MM)	Delivery (MM)	IMP (MM)	HP	RPM	Head (MWC)		v/s	Capacity (M ³ /Hr)		
MCP - 190	40	40	190	2	1440	12 00	11 06	10 10	09 16	08 22	07 24
MCP - 200	75	40	205	3	1440	15 00	13 10	12 15	11 23	10 28	09 30
MCP - 210	75	50	210	5	1440	16 00	14 20	12 30	10 36	09 42	08 44

Low head (upto 16 mts) medium capacity pumps coupled to 1440 RPM motors

Data Subject to changed without prior intimation.

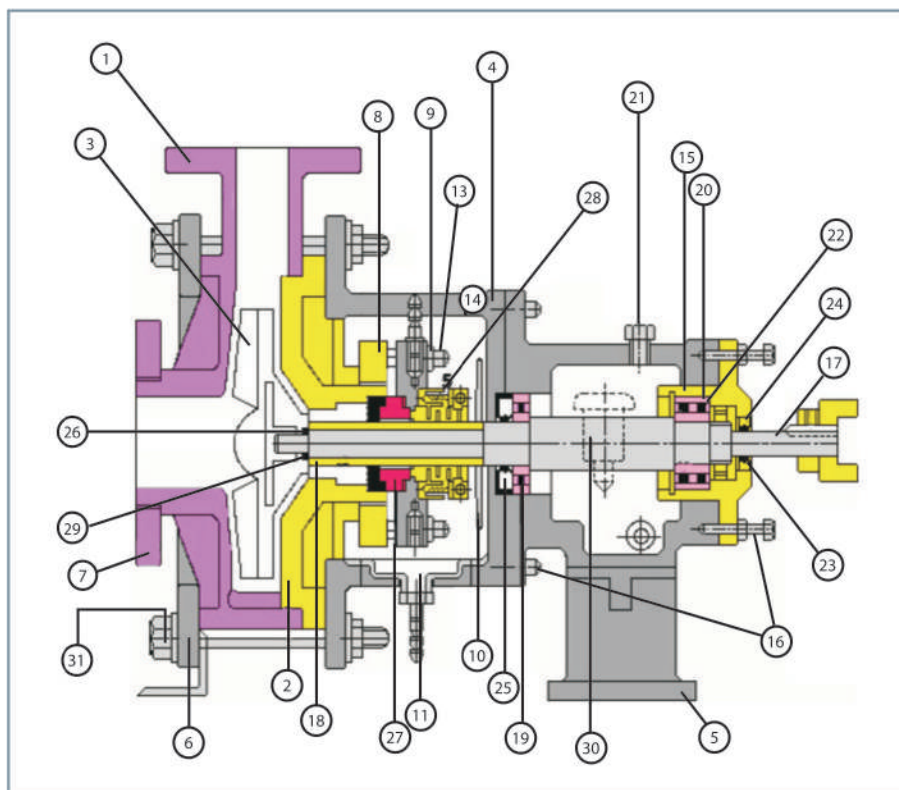
These Pumps are Normally Recommended for :

- Transferring acids / alkalies / corrosive chemicals
- Loading and unloading of tankers.
- Transfer of effluent (max. 3 m. negative suction) with foot valve arrangement in E.T.P.
- Recirculation of chemicals in electroplating plants and pickling plants.
- Pumps are available with Internal Mechanical Seals (IMS).

- Pumps are available in Gland Packing construction.
- Above pumps are also available in PTFE lined construction.
- Pumps are also available in Gland Packing
- Pumps are supplied with special Mech.Seals for applications like Slurries, thicker liquids, mixing fluids etc.

Performance data mentioned are indicative & subject to change without any prior notice.

CROSS - SECTION

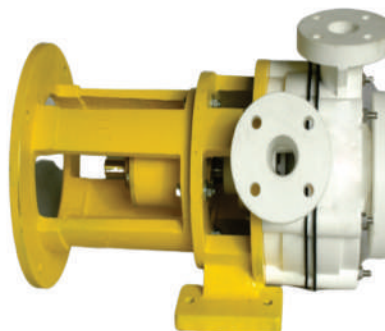


Sr. No.	Part Name	M.O.C.	Sr. No.	Part Name	M.O.C.
1.	Volute Casing	Polypropylene	17.	Bare Shaft	EN-8/EN41
2.	Back Plate	Polypropylene	18.	Shaft Sleeve	Ceramic
3.	Impeller	PP	19.	Bearing	Steel
4.	Adapter	Cast Iron	20.	Bearing	Steel
5.	Leg	Cast Iron	21.	Circlip	Steel
6.	Cage-Ring	Cast Iron	22.	Star Washer	Steel
7.	Suction Flange	Polypropylene	23.	Lock Nut	Steel
8.	Adapter Flange	Polypropylene	24.	Oil Seal (40 x 25 x 10)	Neoprene
9.	Locating Flange	Hylem	25.	Oil Seal (35 x 72 x 10)	Neoprene
10.	Deflector	Polypropylene	26.	'O' Ring	Neoprene
11.	Drip-Tray	Polypropylene	27.	St. Unit Mech. Seal	Ceramic
12.	Reducer-40 x 40 (Optional)	Polypropylene	28.	Rotary Unit Mech. Seal	Teflon Bellow
13.	Bolts for Clamp	PP - SS	29.	Impeller Seal Ring	P.T.F.E.
14.	Bearing Housing	Cast Iron	30.	Constant Level Oiler	Al/ABS Plastic
15.	Bearing Cover	Cast Iron	31.	Cage Ring Hardware	MS CAD PLTD
16.	Bearing Housing Hardware	M.S. CAD Pltd.			

Vertical Seal-less Pumps

- Zero maintenance pumps, eliminates the need for Gland Packing and Seal.
- Leak proof and can run DRY without damage of rotating parts.
- Pumps to be mounted out side the suction tank in vertical position and not to be submerged.
- Vertical Gland less Pump, similar in hydraulic design to any conventional centrifugal pump, it differs in, so far as restriction is provided, escape by way of an overflow Connection in the upper pump body & return to the suction line.
- Preferred selection for E.T.P. Plant due to seal-less design.

- Minimum component makes maintenance easy.
- Low maintenance cost and prolong life.



VGL-160

Performance Data

Model No.	Suction (MM)	Delivery (MM)	IMP (MM)	HP	RPM	Head (MWC)			v/s	Capacity (M ³ / Hr)		
VGL - 100	25	25	100	1	2900	7	8	10	11	12	13	
						11	9	6	5	3	00	
VGL - 120	40	40	120	2	2900	10	12	14	15	16	18	
						24	20	16	12	08	00	
VGL - 150	50	40	150	3	2900	24	22	20	18	15	10	
						00	3	5	10	20	26	
VGL - 160	75	40	160	5	2900	31	26	25	20	15	10	
						00	12	15	25	30	35	

- Ideally recommended for transfer of treated effluent.
- No mechanical seal / glands, hence pump can run dry.
- Low maintenance cost and easy to maintain.
- Pumps are also available in Gland Packing
- Pumps are supplied with special Mech.Seals for applications like Slurries, thicker liquids, mixing fluids etc.

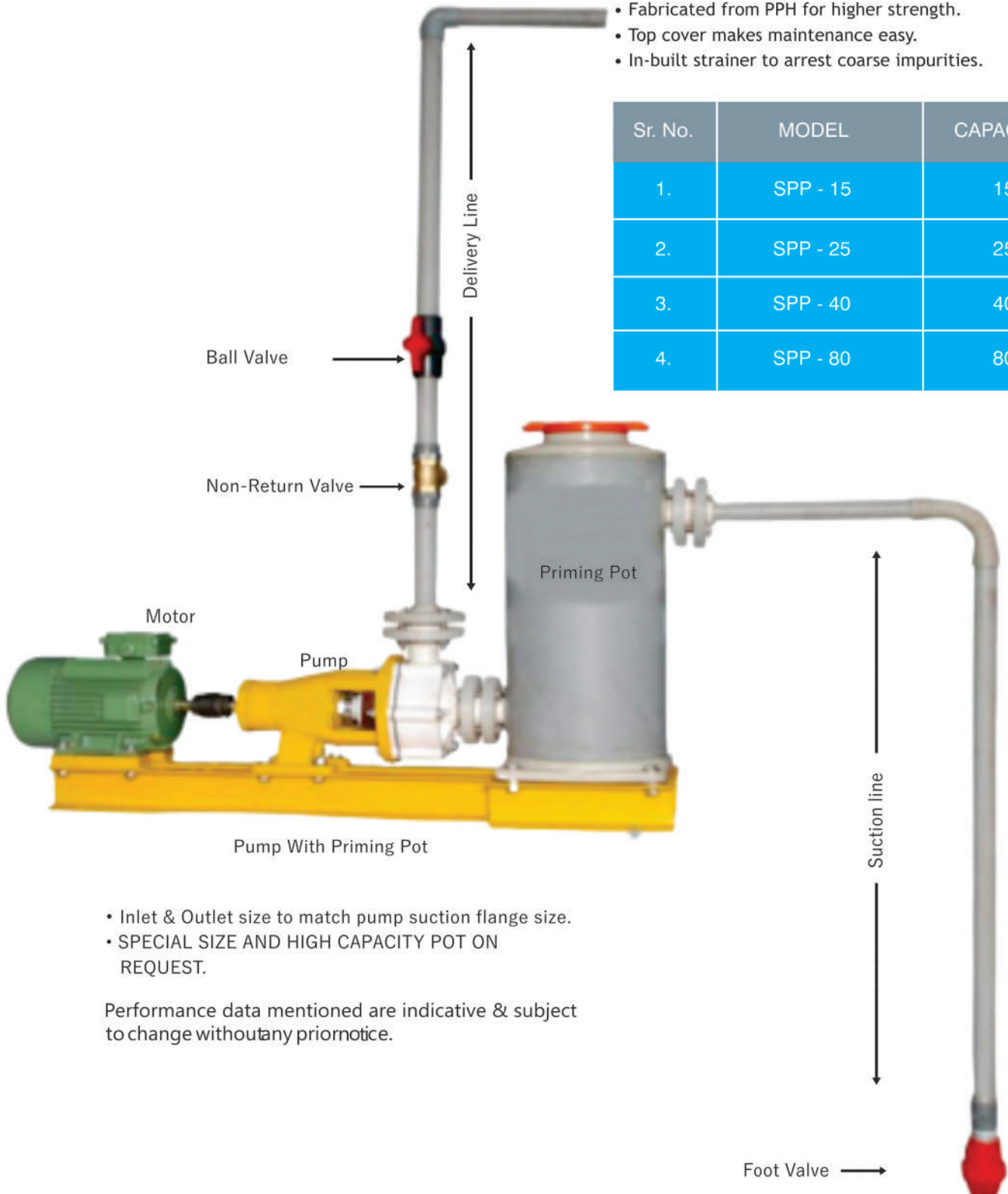
We are fully committed to providing the finest pumps, the best engineering, the most effective customer service & the fastest after sales support possible.

Performance data mentioned are indicative & subject to change without any prior notice.

Priming Pot

- Suitable for 3 to 5 mtr. negative suction lift.
- Available in moulded PP as std. material.
- Fabricated from PPH for higher strength.
- Top cover makes maintenance easy.
- In-built strainer to arrest coarse impurities.

Sr. No.	MODEL	CAPACITY
1.	SPP - 15	15
2.	SPP - 25	25
3.	SPP - 40	40
4.	SPP - 80	80



- Inlet & Outlet size to match pump suction flange size.
- SPECIAL SIZE AND HIGH CAPACITY POT ON REQUEST.

Performance data mentioned are indicative & subject to change without any prior notice.

Certifications


Certificate of Compliance

Application Of Council Of Directive For LVD 2006/42/EC Machinery

FLUIDOTECH PUMPS & EQUIPMENT PVT. LTD.
Regd. Office: A- 62/487, National Market, Near Prachin Shiv Mandir,
Peera Garhi, New Delhi -110087, India
Factory: Plot No. K-1/ 228 Near Telephone Exchange, Phase 1, GIDC,
Gundlav, Dist. Valsad -396035, Gujarat, India

The Technical Document maintained by the organization has been reviewed and found to comply with the requirements of LVD CLASS I

Manufacturing, Supply & Installation of Investment Cast Centrifugal Pump in (Cast Steel, 55304, CF8), 55316 (CF8M), 55316L (CF3M), Alloy 20, Hastelloy-B, Hastelloy, Duplex 55), Non Metallic Centrifugal Pump (Polypropylene/ PPH/ UHMW/ PVDF/ PFA/ FEP Lined) & CI Monoblock Pump, Dosing Pump, Screw/ Gear/ Air Operated Diaphragm Pumps, Dewatering Pumps, Motors, Control Pipe Fittings, Valves, Filters/ Filtration Systems, Pollution Control Equipment with Instrumentation, Accessories and Spare Parts of above Items in National and International Markets offering their With Application Engineering Services.

Products Described Above Conform With The Essential Health And Safety Requirements Of Council Directive 2006/42/EC On
The Approximation Of The Laws Of The Member States Relating To The Safety Of Products
The following Technical Specification Applied:

2006/42/EC Machinery (Low Voltage Directive)

Certificate Confirms That The Product Complies With Essential Safety Requirement And Objective Of Machine Directive/Standard For Certification
This is to certify that the Product is in conformity with all Council Directive 2006/42/EC Machinery

Certificate No:- CE-201912005
Date of Issue: 24, December, 2019
Valid Until: 23, December, 2022*

1st Surveillance Due On: 24/11/2020: Done On:
2nd Surveillance Due On: 24/11/2021: Done On:



Issued by: 
Authorised signatory KVQA

This Certificate Remains The Property Of KVQA and The Certificate Validation Shall be Ensured Through Regular Surveillance Audit
KVQA Certification Services Pvt. Ltd.
To Check the Status of Certification Kindly Log on to www.kvqa.in
F-300, Sector-43, Noida-201301, U.P., India. Ph-011-22711940, 22711941 Email:delhi@kvqa.com


Certificate of Registration
(Environmental Management System)

KVQA CERTIFICATION SERVICES PVT. LTD.
This is to certify that the Environmental Management System of
FLUIDOTECH PUMPS & EQUIPMENT PVT. LTD.
Regd. Office: A- 62/487, National Market, Near Prachin Shiv Mandir,
Peera Garhi, New Delhi -110087, India
Factory: Plot No. K-1/ 228 Near Telephone Exchange, Phase 1, GIDC,
Gundlav, Dist. Valsad -396035, Gujarat, India

Has been found to be of the Environmental Management System Standard
ISO 14001:2015

This certificate is valid for the following product or service range
Manufacturing, Supply & Installation of Investment Cast Centrifugal Pump in (Cast Steel, 55304, CF8), 55316 (CF8M), 55316L (CF3M), Alloy 20, Hastelloy-B, Hastelloy, Duplex 55), Non Metallic Centrifugal Pump (Polypropylene/ PPH/ UHMW/ PVDF/ PFA/ FEP Lined) & CI Monoblock Pump, Dosing Pump, Screw/ Gear/ Air Operated Diaphragm Pumps, Dewatering Pumps, Motors, Control Pipe Fittings, Valves, Filters/ Filtration Systems, Pollution Control Equipment with Instrumentation, Accessories and Spare Parts of above Items in National and International Markets offering their With Application Engineering Services.

1st Surveillance Due On: 24/11/2020: Done On:
2nd Surveillance Due On: 24/11/2021: Done On:



Issued by: 
Authorised signatory KVQA

Certificate No: IESC201912012
Date Of Issue: 24, December, 2019
Valid Until: 23, December, 2022*


MS400913IN
www.jas-anz.org

JAS-ANZ is the government-appointed accreditation body for Australia and New Zealand responsible for providing accreditation of conformity assessment bodies (CABs) in the fields of certification and inspection. Accreditation by JAS-ANZ demonstrates the competence and independence of KVQA. Accredited by a member of IAF's MLA for Quality Systems. To Check the Status of the Certification kindly log on to www.kvqa.in F-300, Sector-43, Noida U.P, India. Ph:011-22711940, 22711941, email: delhi@kvqa.com *Subject to successful completion of surveillance audits

ISO 14001:2015


Certificate of Registration
(Quality Management System)

KVQA CERTIFICATION SERVICES PVT. LTD.
This is to certify that the Quality Management System of
FLUIDOTECH PUMPS & EQUIPMENT PVT. LTD.
Regd. Office: A- 62/487, National Market, Near Prachin Shiv Mandir,
Peera Garhi, New Delhi -110087, India
Factory: Plot No. K-1/ 228 Near Telephone Exchange, Phase 1, GIDC,
Gundlav, Dist. Valsad -396035, Gujarat, India

Has been found to be of the Quality Management System Standard
ISO 9001:2015

This certificate is valid for the following product or service range
Manufacturing, Supply & Installation of Investment Cast Centrifugal Pump in (Cast Steel, 55304, CF8), 55316 (CF8M), 55316L (CF3M), Alloy 20, Hastelloy-B, Hastelloy, Duplex 55), Non Metallic Centrifugal Pump (Polypropylene/ PPH/ UHMW/ PVDF/ PFA/ FEP Lined) & CI Monoblock Pump, Dosing Pump, Screw/ Gear/ Air Operated Diaphragm Pumps, Dewatering Pumps, Motors, Control Pipe Fittings, Valves, Filters/ Filtration Systems, Pollution Control Equipment with Instrumentation, Accessories and Spare Parts of above Items in National and International Markets offering their With Application Engineering Services.

1st Surveillance Due On: 24/11/2020: Done On:
2nd Surveillance Due On: 24/11/2021: Done On:



Issued by: 
Authorised signatory KVQA

Certificate No: IQSC201912034
Date Of Issue: 24, December, 2019
Valid Until: 23, December, 2022*


MS400913IN
www.jas-anz.org

JAS-ANZ is the government-appointed accreditation body for Australia and New Zealand responsible for providing accreditation of conformity assessment bodies (CABs) in the fields of certification and inspection. Accreditation by JAS-ANZ demonstrates the competence and independence of KVQA. Accredited by a member of IAF's MLA for Quality Systems. To Check the Status of the Certification kindly log on to www.kvqa.in F-300, Sector-43, Noida U.P, India. Ph:011-22711940, 22711941, email: delhi@kvqa.com *Subject to successful completion of surveillance audits

ISO 9001:2015


Certificate of Registration
(Occupational Health & Safety Management System)

KVQA CERTIFICATION SERVICES PVT. LTD.
This is to certify that the Occupational Health & Safety Management System of
FLUIDOTECH PUMPS & EQUIPMENT PVT. LTD.
Regd. Office: A- 62/487, National Market, Near Prachin Shiv Mandir,
Peera Garhi, New Delhi -110087, India
Factory: Plot No. K-1/ 228 Near Telephone Exchange, Phase 1, GIDC,
Gundlav, Dist. Valsad -396035, Gujarat, India

Has been found to be of the Occupational Health & Safety Management System Standard
ISO 45001:2018 (OH&S)

This certificate is valid for the following product or service range
Manufacturing, Supply & Installation of Investment Cast Centrifugal Pump in (Cast Steel, 55304, CF8), 55316 (CF8M), 55316L (CF3M), Alloy 20, Hastelloy-B, Hastelloy, Duplex 55), Non Metallic Centrifugal Pump (Polypropylene/ PPH/ UHMW/ PVDF/ PFA/ FEP Lined) & CI Monoblock Pump, Dosing Pump, Screw/ Gear/ Air Operated Diaphragm Pumps, Dewatering Pumps, Motors, Control Pipe Fittings, Valves, Filters/ Filtration Systems, Pollution Control Equipment with Instrumentation, Accessories and Spare Parts of above Items in National and International Markets offering their With Application Engineering Services.

1st Surveillance Due On: 24/11/2020: Done On:
2nd Surveillance Due On: 24/11/2021: Done On:



Issued by: 
Authorised signatory KVQA

Certificate No: IOSC201912008
Date Of Issue: 24, December, 2019
Valid Until: 23, December, 2022*


MS400913IN
www.jas-anz.org

JAS-ANZ is the government-appointed accreditation body for Australia and New Zealand responsible for providing accreditation of conformity assessment bodies (CABs) in the fields of certification and inspection. Accreditation by JAS-ANZ demonstrates the competence and independence of KVQA. Accredited by a member of IAF's MLA for Quality Systems. To Check the Status of the Certification kindly log on to www.kvqa.in F-300, Sector-43, Noida U.P, India. Ph:011-22711940, 22711941, email: delhi@kvqa.com *Subject to successful completion of surveillance audits

ISO 45001:2018 (OH&SA)

Our Some Clients





Fluidotech[™]
Chemical Processing Pumps

Head Office:

Fluidotech Pumps & Equipment Pvt. Ltd.

Plot No: A-62/487 National Market ,
Peeragarhi, New Delhi-110087

Tel : +91 011-2525-6609, 2085-0090

Mobile: +91 96500-86609, 97185-35239

E-mail : sales@fluidotechpumps.com

Factory:

Fluidotech Pumps & Equipment Pvt. Ltd.

Plot No: K-1/ 228, Phase I,
GIDC, Gundlav, Dist. Valsad
396035, Gujrat, India

Mobile : +91 99998-14149

E-mail : works@fluidotechpumps.com